



Picture top: Beverage application
Picture middle: Beverage version
Picture bottom: CNG version

Standard Equipment/Optional Equipment

Standard Equipment

- Linde twin drive pedals to control forward/reverse travel and braking
- Original Linde Load Control integrated in armrest
- Hydraulic suspended comfort-class seat with extensive range of adjustment
- Hydrostatic steering, kickback free
- High safety and stability ensured by Linde ProtectorFrame
- Anti-glare display with fuel gauge, clock, hour meter and service information
- Control lights on display for engine oil pressure, engine over-heating, parking brake, audible warning signal for engine and hydraulic oil temperature, blocked intake filter and low fuel level
- Plenty of storage space for writing utensils, beverage cans...
- Air intake filter with integrated cyclone separator
- High-performance hydraulic filter concept, guarantees maximum oil purity and extends life of all hydraulic components
- LPG truck fitted with a two-way catalytic converter
- The mounting of the gas bottle is ergonomically designed for easy changing

Optional Equipment

- Single drive pedal with direction selector on armrest
- Overhead guard can be upgraded to full cabine with roof, front and rear screens and doors (also available with tinted glass)
- Wiper-washers for front, rear and roof screens
- Further seats with additional comfort and adjustments
- Cab heater with integrated pollen filter
- Air Conditioning
- Radio with SD-card, Bluetooth and speakers
- Sun screens, clipboard, interior lighting, height adjustable steering column
- Standard masts from 3,150 mm to 6,550 mm lift
- Duplex masts (full free lift) from 3,165 mm to 4,765 mm lift
- Triplex masts (full free lift) from 4,705 mm to 6,455 mm lift
- Integrated sideshift
- Integrated fork positioner
- Load backrest
- One or two auxiliary hydraulic circuits for all mast types

- LPG truck fitted with accurate ultrasonic fuel level indicator for exchange bottles
- LPG volumetric fuel tank version with fuel level indicator at the display
- Superelastic tyres

New STANDARD features for the Evo models:

- Variable displacement pump for best energy consumption
- Integrated diesel particulate filter for EU models with 44 kW
- New seat/armrest generation for outstanding ergonomics
- H25/600 replaces H25/500
- LEPS (Linde-Engine-Protection-System) as monitoring of the most important truck parameter
- Curve Assist for automatic speed adaption
- Intelligent drive dynamic modi now integrate lift hydraulic
- New development timing belt protection
- Enhanced steering axle
- Handhold for safe access at A-pillar
- Energy-efficient electric fan

- Alternative fork lengths
- Tilt cylinder- and roof protection
- Truck lighting, working lamps
- Audible reversing alarm, flasher and strobe beacons
- Mirrors
- Linde original Blue Spot
- Camera and colour monitor
- Road traffic specifications
- Air precleaner
- Oilbath air precleaner
- Volumetric tank (LPG) with capacities of 45 l or 55 l
- 3-way catalytic converter (LPG)
- Unregulated catalyst (Diesel)
- CNG (natural gas) version
- Linde Forklift Data Management
- Custom paintwork

Other options available on request



Diesel, LPG and CNG Forklift Trucks
Capacity 2500 - 3500 kg
H25/600 *EVO*®, H30/500 *EVO*®,
H35/500 *EVO*®

393_02



Safety

Linde ProtectorFrame: The protective overhead guard and its supporting frame together form a strong protective zone providing optimum safety and protection for the operator. Top-mounted tilt cylinders provide seamless and smooth control of the tilt movements for excellent load stability in all operating conditions. This unique design also enables slimmer mast profiles to be fitted for outstanding visibility.

Performance

Low consumption and exhaust level and nevertheless this truck range continues to impress with its excellent performance. Advanced engine and drive technology combined with the original Linde Load Control system enables the operator to use the trucks vast potential to maximise productivity. Precise fingertip control of all mast functions.

Comfort

Step in relaxed, leave again relaxed. Linde brings to this forklift a generously sized automobile-class workspace. A perfect interface between operator and truck has been achieved with the Linde ergonomic design concept. The spacious cab, comfort-class seat with adjustable armrest and intuitive controls allow fast and stress-free working.

Reliability

Proven in tough applications. Decoupling of mast and drive axle with chassis and cabine results in reduced shock and vibration. The enclosed robot-welded chassis is designed for maximum strength and durability. The resilient, maintenance-free mountings of the axles and tilt jacks cut downtime and operating costs.

Productivity

50 years of permanent optimisation of the original Linde hydraulic system leads to effective and cost-efficient work: The original Linde hydrostatic transmission requires no differential, no drum brake, no gearshift and no clutch. As a result, uptime is optimised, productivity is increased and maintenance costs are low.

Features

Original Linde hydrostatic drive

- Sensitive, smooth, and precise driving
- Variable displacement pump for best energy consumption
- No clutch, no differential, and no drum brakes thanks to hydrostatic direct drive
- Robust drive even in extreme environments

Linde ProtectorFrame

- Enclosed, robot-welded chassis for maximum durability and protection of components
- A hinged engine cover and removable service panels give wide, easy access for maintenance
- Hand grip on A-pillar for safe on/off access



Linde twin drive pedals

- Fast and smooth travel direction-changes without constantly moving feet from one pedal to the other
- Short pedal travel
- No strain on ankles or legs
- Operator maintains high efficiency levels

Linde Load Control

- Mini levers for all mast functions mounted on an adjustable armrest
- Precise and effortless fingertip control of all mast functions for safe, efficient load handling
- Engine rpm is automatically synchronised to precisely match hydraulic demands

High-economy engine technology

- Modern, advanced technology Diesel, LPG and CNG engines matched to Linde's demanding requirements
- High torque for impressive and flexible performance
- Extremely fuel efficient
- Exhaust emissions significantly below the current European limits



Linde operator's compartment

- Advanced functional design for optimum operator comfort and efficiency
- Superb working environment with spacious leg and headroom
- Excellent visibility of load and surrounding environment through the slim-line mast sections
- Resilient mounting of mast and drive axle absorbs road shocks and vibrations
- Quiet, stress-free working



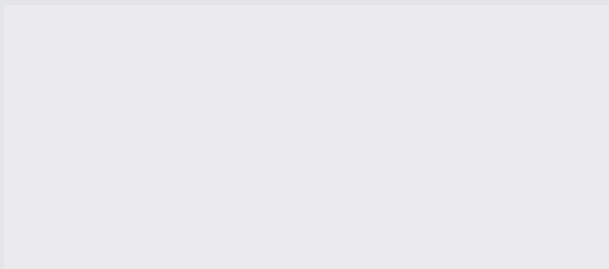
Variable displacement pump

- For mast functions and additional hydraulic circuits
- Electrically controlled by Linde Load Control levers
- The Linde pump only provides the required oil volume
- Less fuel consumption
- Less noise
- Extended oil change intervals



Linde clear-view mast

- Superb visibility through the slim profile mast sections
- Full load capacity available up to maximum lift height
- Excellent residual capacities
- Maintenance-free resilient rubber mounting of mast/drive axle and tilt jacks
- Electronic control of tilt angle
- Electronic cushioning of end travel for forward/back tilt



Linde Material Handling GmbH, Postfach 10 01 36, 63701 Aschaffenburg, Germany
Phone +49.60 21.99-0, Fax +49.60 21.99-15 70, www.linde-mh.com, info@linde-mh.com



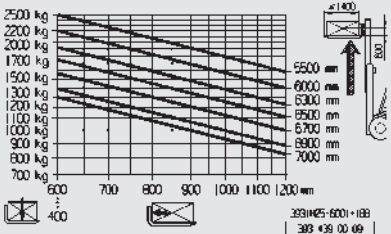
Technical Data according to VDI 2198

| Characteristics | Manufacturer | | LINDE | LINDE | LINDE | LINDE | LINDE | LINDE | LINDE | LINDE | LINDE | LINDE | LINDE | |
|---|---|---------------------|-----------------------------|---------------------------|---------------------------|-----------------------------|---------------------------|---------------------------|---------------------------|---------------------------|---------------------------|---------------------------------|-------------------------------------|--------|
| | 1.2 Model designation | | H25/600D (3B) ¹⁾ | H30D (3B) ¹⁾ | H35D (3B) ¹⁾ | H25/600D (3A) ²⁾ | H30D (3A) ²⁾ | H35D (3A) ²⁾ | H25/600T | H30T | H35T | H30 CNG ³⁾ | H30D (3B) Beverage ^{4) 5)} | |
| | 1.2a Series | | 393-02 | 393-02 | 393-02 | 393-02 | 393-02 | 393-02 | 393-02 | 393-02 | 393-02 | 393-02 | 393-02 | |
| | 1.3 Power unit | | Diesel | Diesel | Diesel | Diesel | Diesel | Diesel | Diesel | LPG | LPG | LPG | CNG | Diesel |
| | 1.4 Operation | | Seat | Seat | Seat | Seat | Seat | Seat | Seat | Seat | Seat | Seat | Seat | Seat |
| Weights | 1.5 Load capacity | Q (t) | 2.5 | 3.0 | 3.5 | 2.5 | 3.0 | 3.5 | 2.5 | 3.0 | 3.5 | 3.0 | 3.0 | |
| | 1.6 Load centre | c (mm) | 600 | 500 | 500 | 600 | 500 | 500 | 600 | 500 | 500 | 500 | 500 | |
| | 1.8 Axle centre to fork face | x (mm) | 442 | 445 | 450 | 442 | 445 | 450 | 442 | 445 | 450 | 445 | 445 | |
| | 1.9 Wheelbase | y (mm) | 1905 | 1930 | 1965 | 1905 | 1930 | 1965 | 1905 | 1930 | 1965 | 1930 | 1930 | |
| | 2.1 Service weight | (kg) | 4090 | 4220 | 4680 | 4090 | 4220 | 4680 | 4070 | 4200 | 4665 | 4200 | 4400 | |
| Wheels/Tyres | 2.2 Axle load with load, front/rear | (kg) | 5797 / 793 | 6419 / 801 | 7242 / 938 | 5797 / 793 | 6419 / 801 | 7242 / 938 | 5757 / 813 | 6379 / 821 | 7207 / 958 | 6379 / 821 | 6529 / 871 | |
| | 2.3 Axle load without load, front/rear | (kg) | 1930 / 2160 | 1950 / 2270 | 2050 / 2630 | 1930 / 2160 | 1950 / 2270 | 2050 / 2630 | 1890 / 2180 | 1910 / 2290 | 2015 / 2650 | 1910 / 2290 | 2060 / 2340 | |
| | 3.1 Tyres rubber, SE, pneumatic, polyurethane | | SE ⁵⁾ | SE ⁵⁾ | SE ⁵⁾ | SE ⁵⁾ | SE ⁵⁾ | SE ⁵⁾ | SE ⁵⁾ | SE ⁵⁾ | SE ⁵⁾ | SE ⁵⁾ | SE ⁵⁾ | |
| | 3.2 Tyre size, front | | 250/75-12 ⁶⁾ | 250/75-12 ⁶⁾ | 250/75-12 ⁶⁾ | 250/75-12 ⁶⁾ | 250/75-12 ⁶⁾ | 250/75-12 ⁶⁾ | 250/75-12 ⁶⁾ | 250/75-12 ⁶⁾ | 250/75-12 ⁶⁾ | 250/75-12 ⁶⁾ | 250/75-12 ⁶⁾ | |
| | 3.3 Tyre size, rear | | 225/75-10 (23x9-10) | 225/75-10 (23x9-10) | 225/75-10 (23x9-10) | 225/75-10 (23x9-10) | 225/75-10 (23x9-10) | 225/75-10 (23x9-10) | 225/75-10 (23x9-10) | 225/75-10 (23x9-10) | 225/75-10 (23x9-10) | 225/75-10 (23x9-10) | 225/75-10 (23x9-10) | |
| Dimensions | 3.5 Wheels, number front/rear (x = driven) | | 2x (4x) / 2 ⁷⁾ | 2x (4x) / 2 ⁷⁾ | 2x (4x) / 2 ⁷⁾ | 2x (4x) / 2 ⁷⁾ | 2x (4x) / 2 ⁷⁾ | 2x (4x) / 2 ⁷⁾ | 2x (4x) / 2 ⁷⁾ | 2x (4x) / 2 ⁷⁾ | 2x (4x) / 2 ⁷⁾ | 2x (4x) / 2 ⁷⁾ | 2x (4x) / 2 ⁷⁾ | |
| | 3.6 Track width, front | b10 (mm) | 1008 | 1008 | 1008 | 1008 | 1008 | 1008 | 1008 | 1008 | 1008 | 1008 | 1008 | |
| | 3.7 Track width, rear | b11 (mm) | 932 | 932 | 932 | 932 | 932 | 932 | 932 | 932 | 932 | 932 | 932 | |
| | 4.1 Mast/fork carriage tilt, forward/backward | a/b (°) | 5.0 / 8.0 | 5.0 / 8.0 | 5.0 / 8.0 | 5.0 / 8.0 | 5.0 / 8.0 | 5.0 / 8.0 | 5.0 / 8.0 | 5.0 / 8.0 | 5.0 / 8.0 | 5.0 / 8.0 | 4.0 / 8.0 | |
| | 4.2 Height of mast, lowered | h1 (mm) | 2264 | 2264 | 2264 | 2264 | 2264 | 2264 | 2264 | 2264 | 2264 | 2264 | 2714 | |
| | 4.3 Free lift | h2 (mm) | 150 | 150 | 150 | 150 | 150 | 150 | 150 | 150 | 150 | 150 | 150 | |
| | 4.4 Lift | h3 (mm) | 3050 | 3050 | 3050 | 3050 | 3050 | 3050 | 3050 | 3050 | 3050 | 3050 | 3950 | |
| | 4.5 Height of mast, extended | h4 (mm) | 3840 | 3840 | 3840 | 3840 | 3840 | 3840 | 3840 | 3840 | 3840 | 3840 | 4740 | |
| | 4.7 Height of overhead guard (cabin) | h6 (mm) | 2210 | 2210 | 2210 | 2210 | 2210 | 2210 | 2210 | 2210 | 2210 | 2210 | 2630 | |
| | 4.8 Height of seat/stand on platform | h7 (mm) | 1105 | 1105 | 1105 | 1105 | 1105 | 1105 | 1105 | 1105 | 1105 | 1105 | 1525 | |
| | 4.12 Towing coupling height | h10 (mm) | 698 | 698 | 690 | 698 | 698 | 690 | 698 | 698 | 690 | 698 | 698 | |
| | 4.19 Overall length | l1 (mm) | 3724 | 3755 | 3795 | 3724 | 3755 | 3795 | 3724 | 3755 | 3795 | 3755 | 3755 | |
| | 4.20 Length to fork face | l2 (mm) | 2724 | 2755 | 2795 | 2724 | 2755 | 2795 | 2724 | 2755 | 2795 | 2755 | 2755 | |
| | 4.21 Overall width | b1/b2 (mm) | 1256 ⁸⁾ | 1256 ⁸⁾ | 1256 ⁸⁾ | 1256 ⁸⁾ | 1256 ⁸⁾ | 1256 ⁸⁾ | 1256 ⁸⁾ | 1256 ⁸⁾ | 1256 ⁸⁾ | 1256 ⁸⁾ | 1256 ⁸⁾ | |
| | 4.22 Fork dimensions | s/e/l (mm) | 45 x 100 x 1000 | 45 x 100 x 1000 | 50 x 120 x 1000 | 45 x 100 x 1000 | 45 x 100 x 1000 | 50 x 120 x 1000 | 45 x 100 x 1000 | 45 x 100 x 1000 | 50 x 120 x 1000 | 45 x 100 x 1000 | 45 x 100 x 1000 | |
| | 4.23 Fork carriage to ISO 2328, class/type A, B | | 3A | 3A | 3A | 3A | 3A | 3A | 3A | 2A | 3A | 3A | 3A | |
| | 4.24 Width of fork carriage | b3 (mm) | 1150 ⁹⁾ | 1150 ⁹⁾ | 1150 ⁹⁾ | 1150 ⁹⁾ | 1150 ⁹⁾ | 1150 ⁹⁾ | 1150 ⁹⁾ | 1150 ⁹⁾ | 1150 ⁹⁾ | 1150 ⁹⁾ | 1150 ⁹⁾ | |
| | 4.31 Ground clearance, below mast | m1 (mm) | 119 | 119 | 117 | 119 | 119 | 117 | 119 | 119 | 117 | 119 | 119 | |
| | 4.32 Ground clearance, centre of wheelbase | m2 (mm) | 173 | 173 | 172 | 173 | 173 | 172 | 173 | 173 | 173 | 173 | 173 | |
| | 4.33 Aisle width with pallet 1000 x 1200 across forks | Ast (mm) | 4062 ¹⁰⁾ | 4089 ¹⁰⁾ | 4126 ¹⁰⁾ | 4062 ¹⁰⁾ | 4089 ¹⁰⁾ | 4126 ¹⁰⁾ | 4062 ¹⁰⁾ | 4089 ¹⁰⁾ | 4126 ¹⁰⁾ | 4089 ¹⁰⁾ | 4089 ¹⁰⁾ | |
| 4.34 Aisle width with pallet 800 x 1200 along forks | Ast (mm) | 4262 ¹⁰⁾ | 4289 ¹⁰⁾ | 4326 ¹⁰⁾ | 4262 ¹⁰⁾ | 4289 ¹⁰⁾ | 4326 ¹⁰⁾ | 4262 ¹⁰⁾ | 4289 ¹⁰⁾ | 4326 ¹⁰⁾ | 4289 ¹⁰⁾ | 4289 ¹⁰⁾ | | |
| 4.35 Turning radius | Wa (mm) | 2420 | 2444 | 2476 | 2420 | 2444 | 2476 | 2420 | 2444 | 2476 | 2444 | 2444 | | |
| Performance | 4.36 Minimum pivoting point distance | b13 (mm) | 580 | 580 | 580 | 580 | 580 | 580 | 580 | 580 | 580 | 580 | 580 | |
| | 5.1 Travel speed, with/without load | (km/h) | 22 / 22 | 22 / 22 | 22 / 22 | 22 / 22 | 22 / 22 | 22 / 22 | 22 / 22 | 22 / 22 | 22 / 22 | 22 / 22 | 22 / 22 | |
| | 5.2 Lifting speed, with/without load | (m/s) | 0.53 / 0.55 | 0.53 / 0.55 | 0.53 / 0.55 | 0.53 / 0.55 | 0.53 / 0.55 | 0.53 / 0.55 | 0.53 / 0.55 | 0.53 / 0.55 | 0.51 / 0.55 | 0.53 / 0.55 | 0.53 / 0.55 | |
| | 5.3 Lowering speed, with/without load | (m/s) | 0.54 / 0.52 | 0.54 / 0.52 | 0.54 / 0.52 | 0.54 / 0.52 | 0.54 / 0.52 | 0.54 / 0.52 | 0.54 / 0.52 | 0.54 / 0.52 | 0.54 / 0.52 | 0.54 / 0.52 | 0.54 / 0.52 | |
| | 5.5 Tractive force, with/without load | (N) | 19790 / 15150 | 19790 / 15300 | 19790 / 16090 | 19790 / 15150 | 19790 / 15300 | 19790 / 16090 | 20030 / 15150 | 19790 / 14990 | 19790 / 15810 | 19790 / 14990 | 19790 / 15300 | |
| IC-Drive | 5.7 Climbing ability, with/without load | (%) | 32.0 / 33.0 | 27.0 / 30.0 | 24.0 / 28.0 | 32.0 / 33.0 | 27.0 / 30.0 | 24.0 / 28.0 | 32.0 / 33.0 | 27.0 / 30.0 | 23.0 / 28.0 | 27.0 / 30.0 | 27.0 / 31.0 | |
| | 5.9 Acceleration time, with/without load | (s) | 5.1 / 4.5 | 5.3 / 4.6 | 5.6 / 4.7 | 5.3 / 4.6 | 5.6 / 4.7 | 5.8 / 4.9 | 5.6 / 4.7 | 5.7 / 4.8 | 5.8 / 4.9 | 5.9 / 5.0 | 5.3 / 4.6 | |
| | 5.10 Service brake | | hydrostatic | hydrostatic | hydrostatic | hydrostatic | hydrostatic | hydrostatic | hydrostatic | hydrostatic | hydrostatic | hydrostatic | hydrostatic | |
| | 7.1 Engine manufacturer/type | | VW CPYB | VW CPYB | VW CPYB | VW CPYC | VW CPYC | VW CPYC | VW BEF | VW BEF | VW BEF | VW CBS | VW CPYB | |
| | 7.2 Engine performance according to ISO 1585 | (kW) | 44 | 44 | 44 | 36 | 36 | 36 | 39 | 39 | 39 | 37 | 44 | |
| Others | 7.3 Rated speed | (1/min) | 2700 | 2700 | 2700 | 2700 | 2700 | 2700 | 2600 | 2600 | 2600 | 2600 | 2700 | |
| | 7.4 Number of cylinders/displacement | (-/cm3) | 4 / 1968 | 4 / 1968 | 4 / 1968 | 4 / 1968 | 4 / 1968 | 4 / 1968 | 4 / 1984 | 4 / 1984 | 4 / 1984 | 4 / 1984 | 4 / 1968 | |
| | 7.5 Fuel consumption according to VDI cycle | (l/h) | 3.0 | 3.2 | 3.4 | 2.9 | 3.1 | 3.3 | - | - | - | - | 3.2 | |
| | 7.5a Fuel consumption according to VDI cycle | (kg/h) | - | - | - | - | - | - | 2.5 | 2.6 | 2.8 | - | - | |
| | 7.5b Fuel consumption according to VDI cycle | (m3/h) | - | - | - | - | - | - | - | - | - | 3.7 (H); 4.0 (L) ¹¹⁾ | - | |
| 8.1 Type of drive control | | LTC | LTC | LTC | LTC | LTC | LTC | LTC | LTC | LTC | LTC | LTC | LTC | |
| 8.2 Operating pressure for attachments | (bar) | 170 | 170 | 170 | 170 | 170 | 170 | 170 | 170 | 170 | 170 | 170 | 170 | |
| 8.3 Oil flow for attachments | (l/min) | 38 | 38 | 38 | 38 | 38 | 38 | 38 | 38 | 38 | 38 | 38 | 38 | |
| 8.4 Noise level at operator's ear | (dB(A)) | 77 | 77 | 77 | 77 | 77 | 77 | 77 | 77 | 77 | 77 | 77 | 77 | |
| 8.5 Towing coupling, design/type, DIN 15 170 | | similar to form H | similar to form H | similar to form H | similar to form H | similar to form H | similar to form H | similar to form H | similar to form H | similar to form H | similar to form H | similar to form H | similar to form H | |

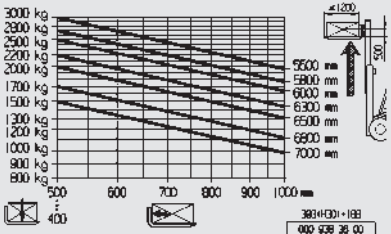
1) With diesel particle filter to comply with legal requirements 2004/26/EG Stage 3 B
2) Without diesel particle filter to comply with legal requirements 2004/26/EG Stage 3 A
3) Other truck models upon request
4) Technical specifications for LPG version upon request
5) Alternative pneumatic tyres
6) 27x10-12, alternative pneumatic tyres, twin tyres 7.00-12 or SE 28x12,5-15
7) Figures in parenthesis refer to twin front tyres.
8) With SE twin tyres = 1611 mm
9) Alternative with SE twin tyres = 1600 mm
10) Including a 200 mm (min.) operating aisle clearance.
11) (H)= high quality, (L)= low quality

Lifting capacity diagrams

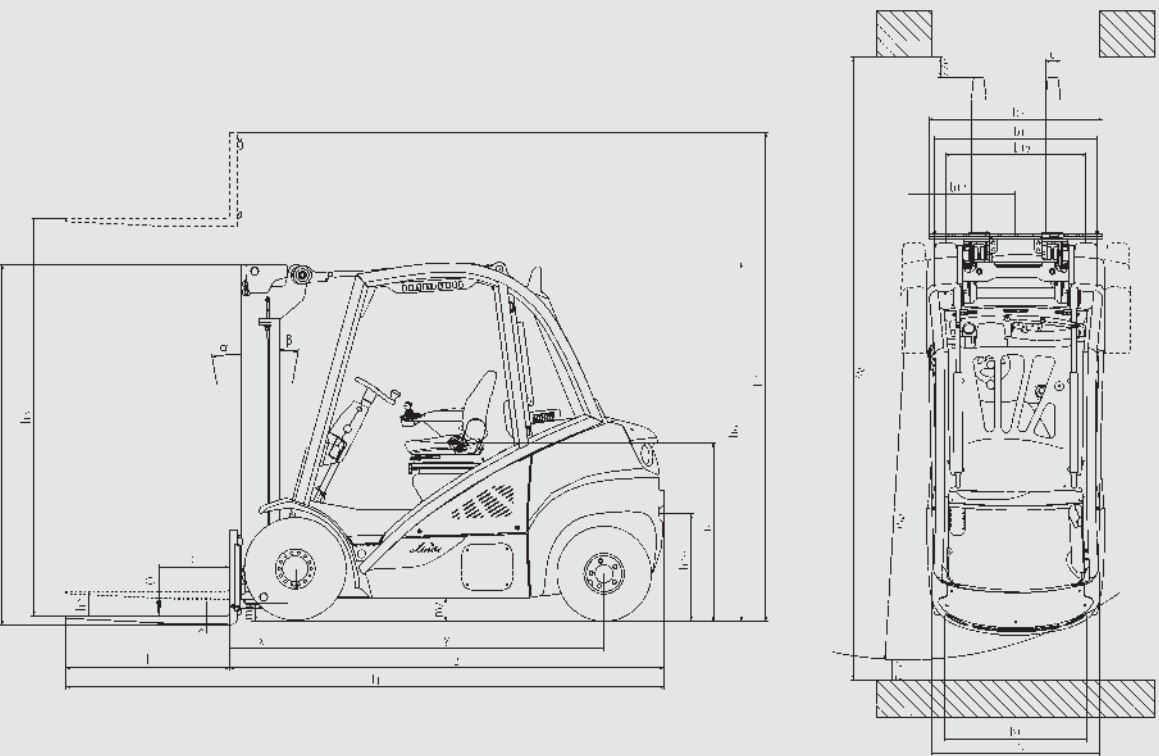
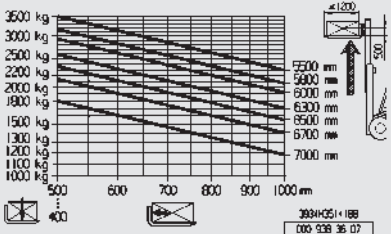
H25/600



H30/500



H35/500



| Overall height and lift heights, Standard (in mm) | | | | | | | |
|---|-----------|------|------|------|------|------|------|
| Height of Mast, lowered | h1 | 2264 | 2414 | 2564 | 2714 | 2964 | 3214 |
| Free lift | h2 | 150 | 150 | 150 | 150 | 150 | 150 |
| Lift | h3 | 3050 | 3350 | 3650 | 3950 | 4450 | 4950 |
| Height of Mast, extended | h4 | 3840 | 4140 | 4440 | 4740 | 5240 | 5740 |
| Overall height and lift heights, Duplex (in mm) | | | | | | | |
| Height of Mast, lowered | h1 | 2190 | 2490 | 2640 | - | - | - |
| Free lift | h2 | 1424 | 1724 | 1874 | - | - | - |
| Lift | h3 | 3115 | 3715 | 4015 | - | - | - |
| Height of Mast, extended | h4 | 3905 | 4505 | 4805 | - | - | - |
| Overall height and lift heights, Triplex (in mm) | | | | | | | |
| Height of Mast, lowered | h1 | 2191 | 2241 | 2491 | 2641 | 2841 | - |
| Free lift | h2 | 1424 | 1474 | 1724 | 1874 | 2074 | - |
| Lift | h3 | 4655 | 4805 | 5505 | 5955 | 6455 | - |
| Height of Mast, extended | h4 | 5445 | 5595 | 6295 | 6745 | 7245 | - |

Alternative lift heights available on request.