

MT1840

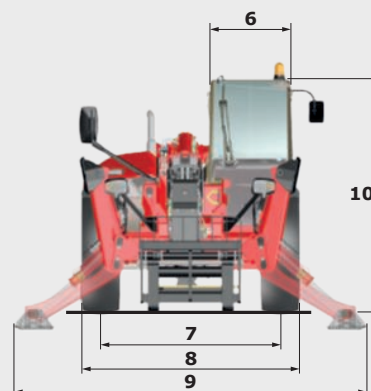
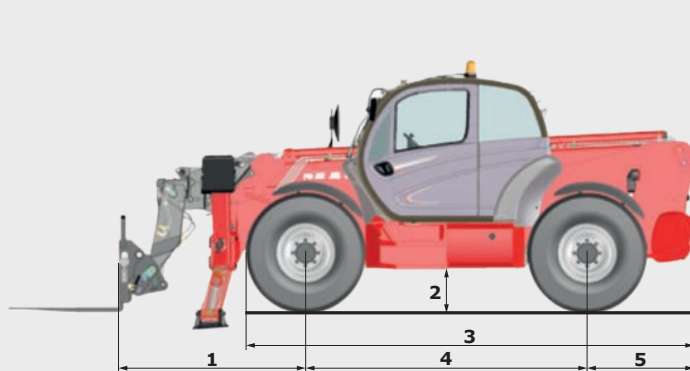


TECHNICAL DATA SHEET



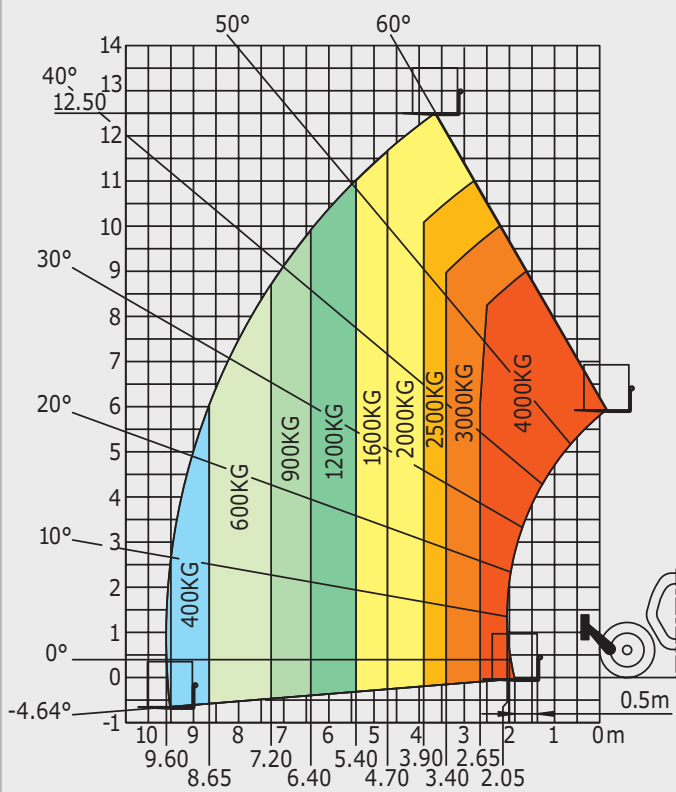
MT1840

	MT 1840		MT 1840 A	MT 1840 H	MT 1840 HA
Lifting					
Max. capacity	4000 kg				
Max. lifting height	17.55 m				
Reach at max. height	0.92 m				
Break-out force with bucket	7900 daN				
Unladen time					
Lifting	17.3 secs	18.0 secs	17.3 secs	18.0 secs	
Lowering	12.7 secs	14.4 secs	12.7 secs	14.4 secs	
Extension	16.1 secs	17.9 secs	16.1 secs	17.9 secs	
Retraction	15.6 secs	16.5 secs	15.6 secs	16.5 secs	
Crowd	5 secs				
Dump	4 secs				
Tyres	400/80-24				
Braking	multiple-disk brake with oil bath on front and rear axles				
Engine	PERKINS - STAGE 3B				
Type	854E-34TA				
Cubic capacity	3400 cm³				
Power	102 HP/75 kW				
Max. torque	420 Nm - 1400 rpm				
Injection	direct				
Cooling	water				
Laden drawbar pull	10250 daN		-		
Transmission	torque converter		hydrostatic		
Reversing shift	electrohydraulic control				
Number of gears (forward/reverse)	4/4		3/3		
Max. travel speed (may vary according to applicable regulations)	27 kph				
Hydraulics					
Pump	gear type with flow splitter - 170 l/min - 270 bar				
Capacities					
Hydraulic oil	175 l				
Fuel	140 l				
Unladen weight (with forks)	11700 kg	12650 kg	11500 kg	12450 kg	
Dimensions					
1. Front wheel centre to carriage	2.04 m				
2. Ground clearance	0.42 m				
3. Overall length to front tyres	4.89 m				
4. Wheelbase	3.07 m				
5. Rear wheel centre to rear face	1.16 m				
6. Overall width of cab	0.89 m				
7. Inside tyre width	1.96 m				
8. Overall width	2.42 m				
9. Overall width (stabilizers lowered)	3.79 m				
10. Overall height	2.45 m				
Turning radius (over tyres)	4.01 m				
Frame levelling	+/- 9°				
Carriage rotation (crowd/dump)	12°/114°				
Noise and vibration					
Noise at driving position (LpA)	82 dB				
Environmental noise (LwA)	106 dB				
Vibration to whole hand/arm	<2.5 m/s²				
Vibration on driver's body	0.985 m/s²				

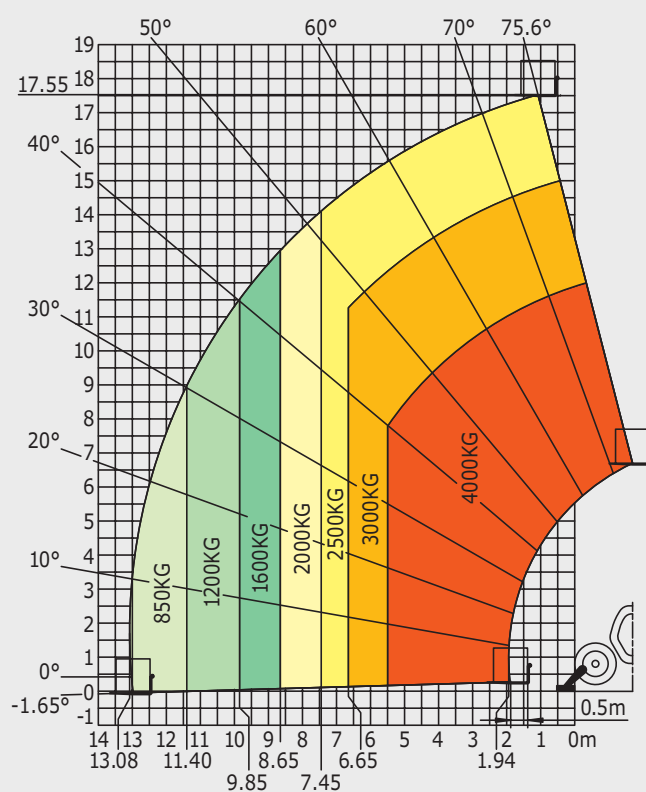


Rough Terrain Load Chart standard EN1459 B

Machine on tyres with forks



Machine on stabilizers with forks



Machine on stabilizers with platform
(MT 1840 A and MT 1840 HA versions)

